



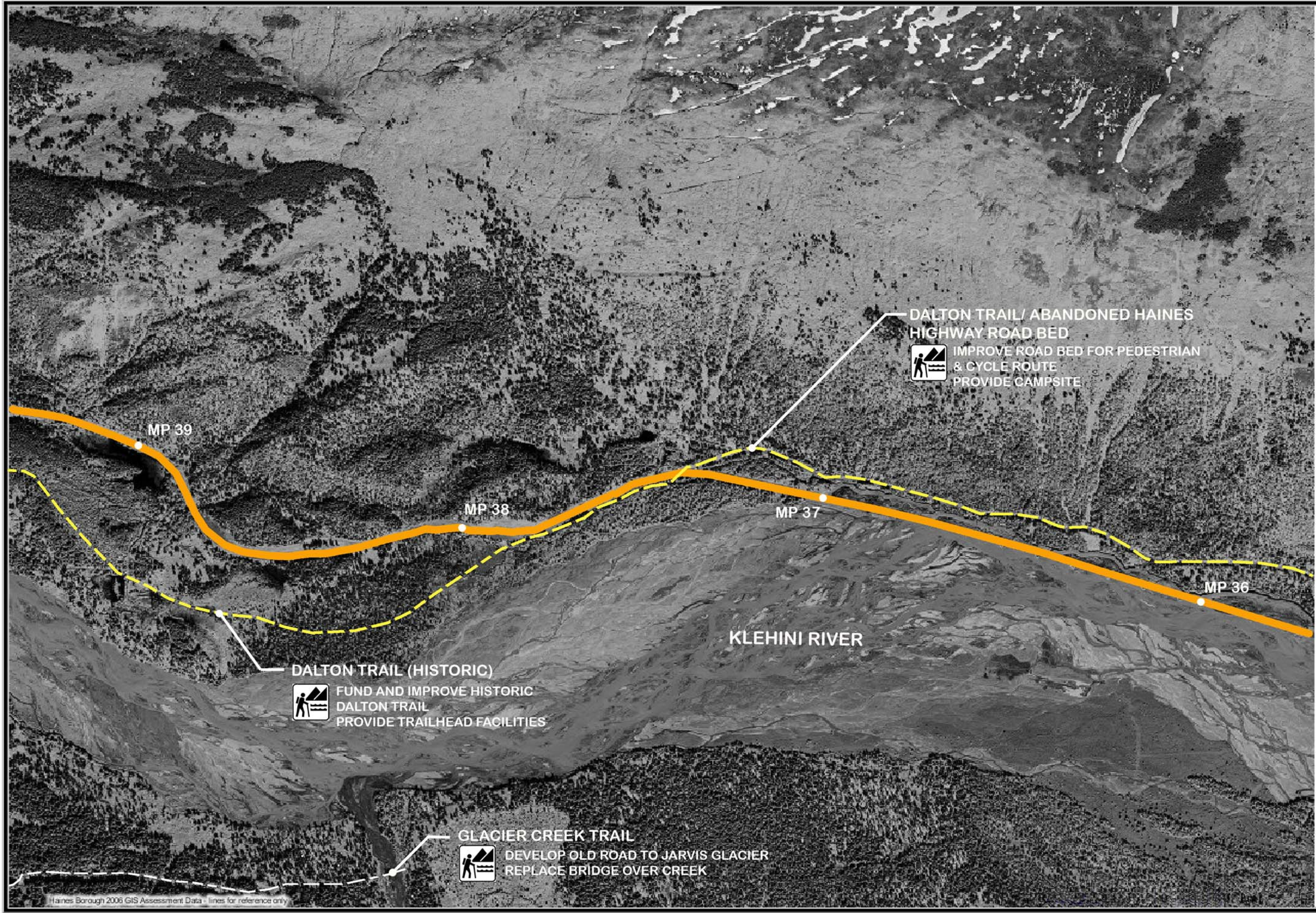
PREPARED FOR

HAINES BOROUGH

PREPARED BY
Jensen
Yorba
Lott
Inc 

HAINES STATE HIGHWAY 'VALLEY OF THE EAGLES BYWAY'

CORRIDOR IMPROVEMENTS MILEPOST: 36.1 TO 39.0




DALTON TRAIL/ ABANDONED HAINES
HIGHWAY ROAD BED
 IMPROVE ROAD BED FOR PEDESTRIAN
& CYCLE ROUTE
PROVIDE CAMPSITE

DALTON TRAIL (HISTORIC)
 FUND AND IMPROVE HISTORIC
DALTON TRAIL
PROVIDE TRAILHEAD FACILITIES

GLACIER CREEK TRAIL
 DEVELOP OLD ROAD TO JARVIS GLACIER
REPLACE BRIDGE OVER CREEK

Haines Borough 2006 GIS Assessment Data - lines for reference only


SCALE:
4" = 1 MILE
(1:17)

MAP
17